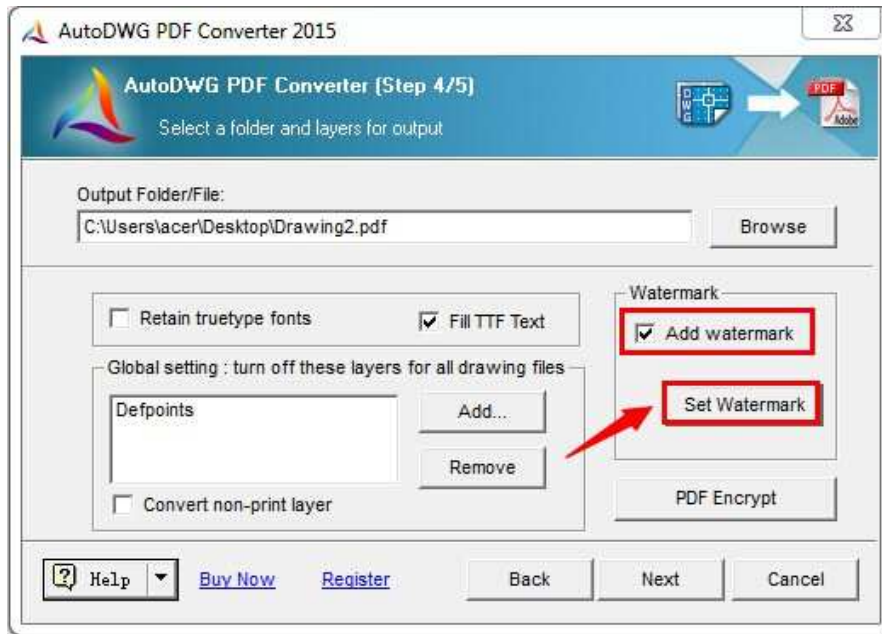


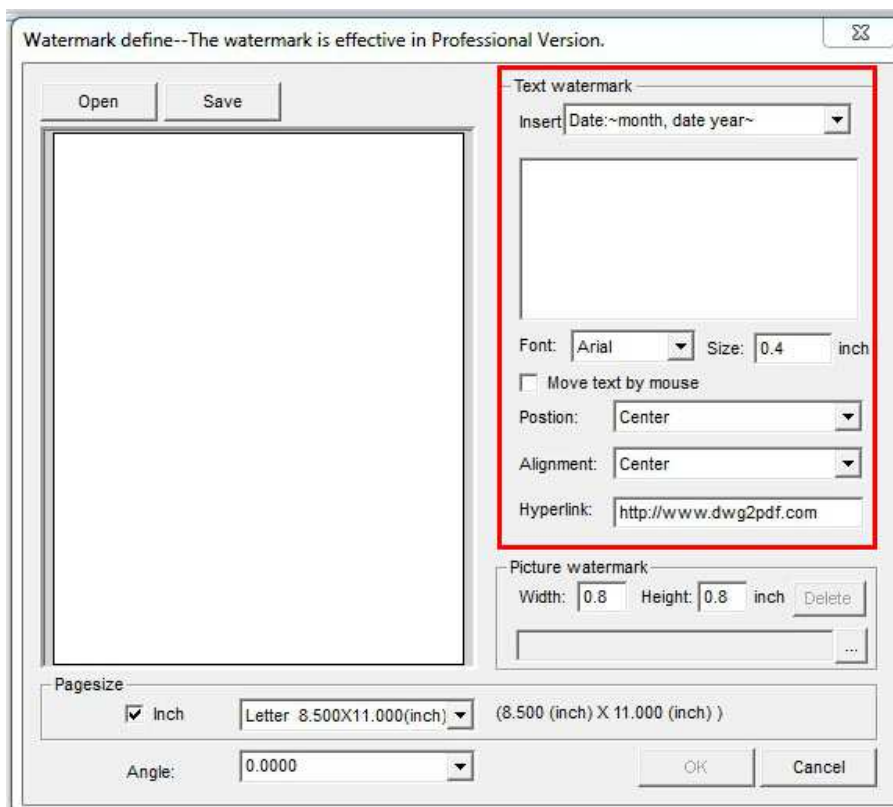
DWG to PDF Converter Custom Watermark User Guide

Add customized watermarks (pro version only)

- To add watermark, please go to the step 4 and check the 'Add Watermark' box, then click on the 'Set Watermark' button.



- Insert test watermark: You can freely add texts in watermark and set text fonts, height, rotation, alignment and position on layouts.



- Insert image watermark: Add company logo or other images as watermark to preserve your copies of intellectual drawings.

