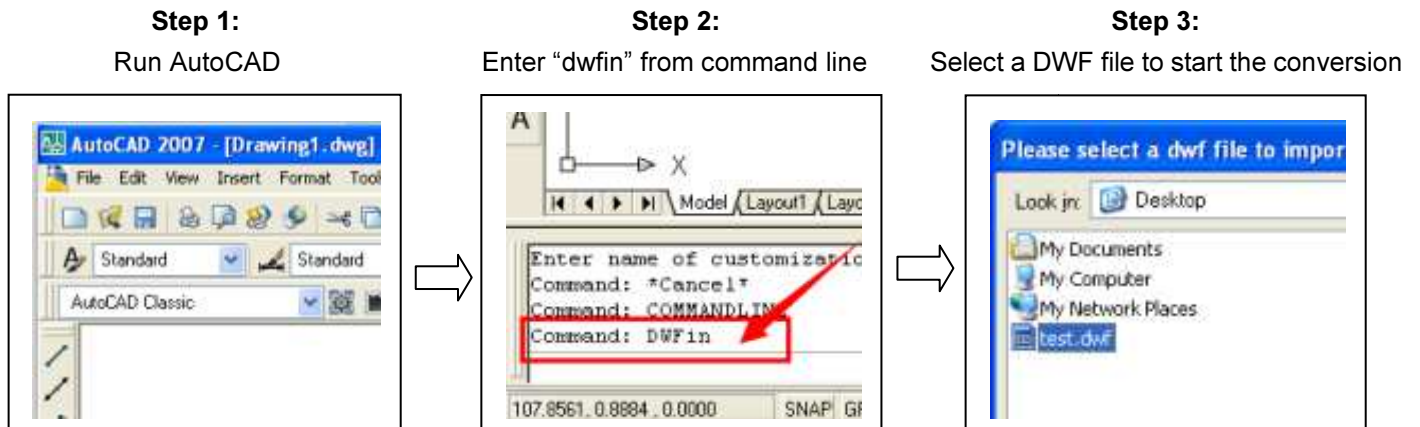


# DWFin DWF to DWG Converter User Guide

DWFin an AutoCAD add-in enables you to import DWF file to AutoCAD, supports AutoCAD version from R14-2012(32-bit version only).

## Quick Start

Three steps to do:



Please wait a moment when the program is processing.  
Then you'll get nice and editable converted drawing files.

## FAQ

### Question 1: I Type DWFin in AutoCAD Command Line, but it prompts: Unknown Command

You Can Try as Followings:

Step1: Please check with your AutoCAD version, it has to be 32 bit AutoCAD FULL blown version, this program won't work with 64 bit version AutoCAD and AutoCAD LT. In case you are running 64 bit AutoCAD or AutoCAD LT, please download and install the pro version that works for you:

<http://www.autodwg.com/download/DWF2DWGPro2015.exe>

And please contact us to alter your license at a fee, if you've purchased incorrect version.

Step2: Please exit and close all windows of AutoCAD and run program install again. If for some reason, DWFin still won't install as AutoCAD plug-in, please try to load it using AutoCAD command line as follows:

- (1) Please go to the program installed folder where DWFin DWF to DWG Converter stored (as default it should installed to C:\Program Files\AutoDWG\DWF Importer), please find out and run the program autload.exe and launch the AutoCAD again.
- (2) Please try command "DWFin", if it still won't work, please from command line enter "ARX", and then press "L" to load, and then go to the program folder where DWFin DWF to DWG Converter installed. (For example: "C:\Program Files\AutoDWG\DWF Importer") select appropriate arx version match to your AutoCAD version, see the table below.

DWFIn210.arx	AutoCAD 2010/2011/2012
DWFIn27.arx	AutoCAD 2007/2008/2009
DWFIn2004.arx	AutoCAD 2004/2005/2006
DWFIn200x.arx	AutoCAD 2000/2002
DWFInR14.arx	AutoCAD R14